



# Instruction Manual

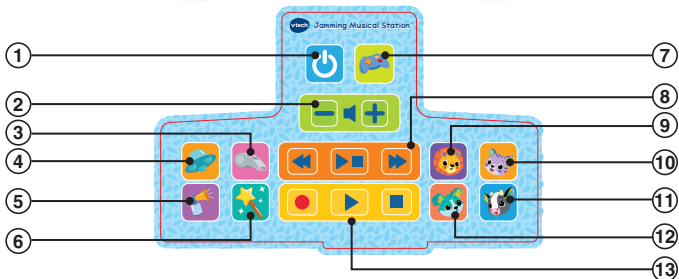
## Jamming Musical Station™



# INTRODUCTION

Thank you for purchasing the **Jamming Musical Station™**.

Groove, riff and create with this music station! Make music using the keyboard, drum and effects buttons. Try different modes to create your own melodies and play the songs on the included cards or mix up something unique.



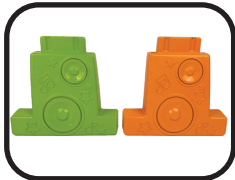
- |                          |  |
|--------------------------|--|
| ① On/Off Button          | ⑧ Prev, Play/Stop, Next Melody Buttons |
| ② Volume Control Buttons | ⑨ Lion Sound Effect                    |
| ③ Whistle Sound Effect   | ⑩ Cat Sound Effect                     |
| ④ UFO Sound Effect       | ⑪ Cow Sound Effect                     |
| ⑤ Airhorn Sound Effect   | ⑫ Dog Sound Effect                     |
| ⑥ Magic Sound Effect     | ⑬ Record, Play, Stop Buttons           |
| ⑦ Game Button            |  |

# INCLUDED IN THIS PACKAGE

- Jamming Musical Station™



- 2 Removable Legs



- 2 Double-Sided Music Cards



- Quick Start Guide



## WARNING

All packing materials such as tape, plastic sheets, packaging locks, removable tags, cable ties, cords and packaging screws are not part of this toy, and should be discarded for your child's safety.

## NOTE

Please save this Instruction Manual as it contains important information.

## ATTENTION

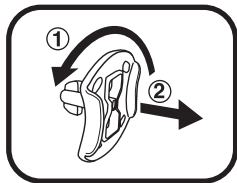
Pour la sécurité de votre enfant, débarrassez-vous de tous les produits d'emballage tels que rubans adhésifs, feuilles de plastique, attaches, étiquettes, cordons et vis d'emballage. Ils ne font pas partie du jouet.

## NOTE

Il est conseillé de sauvegarder ce manuel d'utilisation car il comporte des informations importantes.

## Unlock the Packaging Locks

- ① Turn the packaging locks 90 degrees counterclockwise.
- ② Pull out the packaging locks and discard.



# GETTING STARTED

## ACTIVATE NORMAL PLAY MODE

The unit is in Try-Me mode while inside the packaging. This mode should exit automatically once the packaging locks are removed and the unit is taken out of the box.

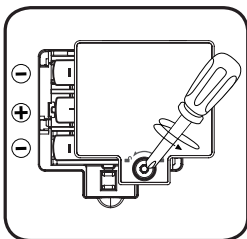
If the keyboard does not exit Try-Me mode automatically, follow these steps:

1. Turn the unit off.
2. Press and hold both the “D5” and “G5” keys.
3. While holding the keys, press the **ON/OFF** button to turn the unit on. You will hear a “DuDuDu” sound to confirm that Try-Me mode has been exited. The keyboard will then enter normal mode.



## Battery Removal and Installation

1. Make sure the unit is turned **Off**.
2. Find the battery cover located at the back of the unit, use a screwdriver to loosen the screw and then open the battery cover.
3. Remove old batteries by pulling up on one end of each battery.
4. Install 3 new 1.5V AA (LR6) batteries following the diagram inside the battery box (for best performance, alkaline batteries or fully charged Ni-MH rechargeable batteries are recommended).
5. Replace the battery cover and tighten the screw to secure.





## **WARNING:**

Adult assembly required for battery installation.  
Keep batteries out of reach of children.



## **ATTENTION :**

Les piles ou accumulateurs doivent être installés par un adulte.  
Tenir les piles ou accumulateurs hors de portée des enfants.

## **IMPORTANT: BATTERY INFORMATION**

- Insert batteries with the correct polarity (+ and -).
- Do not mix old and new batteries.
- Do not mix alkaline, standard (carbon-zinc) or rechargeable batteries.
- Only batteries of the same or equivalent type as recommended are to be used.
- Do not short-circuit the supply terminals.
- Remove batteries during long periods of non-use.
- Remove exhausted batteries from the toy.
- Dispose of batteries safely. Do not dispose of batteries in fire.

## **RECHARGEABLE BATTERIES**

- Rechargeable batteries are only to be charged under adult supervision.
- Do not charge non-rechargeable batteries.

## **IMPORTANT : INFORMATIONS CONCERNANT LES PILES**

- Mettre en place les piles ou les accumulateurs en respectant les polarités + et -.
- Ne pas mélanger des piles ou des accumulateurs neufs avec des usagés.
- Ne pas mélanger différents types de piles : alcalines, zinc-carbone et rechargeables.
- Seules des piles du type recommandé doivent être utilisées.
- Ne pas mettre les bornes d'une pile ou d'un accumulateur en court-circuit (en reliant directement le + et le -).

- Retirer les piles ou les accumulateurs en cas de non-utilisation prolongée.
- Enlever les piles ou les accumulateurs usagés du jouet.
- Ne les jeter ni au feu ni dans la nature.

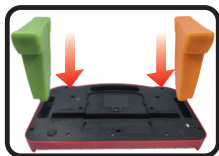
### PILES RECHARGEABLES :

- Les accumulateurs ne doivent être chargés que sous la surveillance d'un adulte.
- Ne pas tenter de recharger des piles non rechargeables.

## ASSEMBLY INSTRUCTIONS

**NOTE: Adult assembly required.**

Insert the two legs into the back of the **Jamming Musical Station™**, as illustrated. Ensure the patterned sides of the legs face outward. For tabletop play, gently remove the legs.



## PRODUCT FEATURES

### 1. On/Off Button

To turn the unit **On**, press the **On/Off Button**. Press the **On/Off Button** again to turn the unit **Off**.

### 2. Volume Control Buttons

Press the **Volume Buttons** to adjust the volume.

### 3. Instrument Selector Slider

Move the **Instrument Selector Slider** to change the instrument sound (piano, trumpet, violin, saxophone or xylophone).




## 4. Piano Keys

### Free Play Mode:

This is the default mode. The keyboard will automatically enter Free Play Mode when turned on. Press the white and black piano keys to create your own music.



### Game Mode:

Press the Game Button  to enter Game Mode. In this mode, press any key to answer questions and play musical notes.

## 5. Tempo Slider and LED Lights

The **Tempo Slider** features three LED lights that flash along with the melody or sound effects.

### Free Play Mode:

Slide the Tempo Slider to adjust the tempo or add sound effects.

### Game Mode:

Slide the Tempo Slider to answer questions.



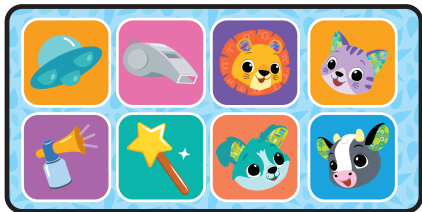
## 6. Drum Pad

Press the **Drum Pad** to add drum sounds in Free Play Mode or to answer questions in Game Mode.



## 7. Fun and Animal Sound Effect Buttons

Press the **Fun and Animal Sound Effect Buttons** to add playful sounds in Free Play Mode, or to answer questions in Game Mode.



## 8. Recording Button

Press the **Recording Button** to record your creations. You can record music by playing the piano keys, pressing the sound effect or animal sound buttons, tapping the drum pad, or using the tempo slider.

## 9. Play Button

Press the **Play Button** to listen to your recorded creations.

## 10. Stop Button

Press the **Stop Button** to stop the recording.

## 11. Game Button

Press the **Game Button** to enter **Game Mode**.

## 12. Prev, Play/Stop, Next Melody Buttons

Use the **Melody Buttons** to navigate songs.

Prev Melody: Listen to the previous melody.

Play/Stop Melody: Play or stop the melody.

Next Melody: Listen to the next melody.



## 13. Automatic Shut-Off

To preserve battery life, the unit will automatically turn off after a short while without input. The unit can be turned on again by press the **On/Off Button**. The unit will also automatically turn off when the batteries are very low. The Drum Pad LED will flash as a reminder to change the batteries.


**NOTE:** If the unit powers down or if the light fades out during play, please install a new set of batteries.

# ACTIVITIES

## Free Play Mode

- Press the **Prev, Play/Stop, and Next Melody Buttons** to select a melody.
- Slide the **Instrument Selector Slider** to play notes with the chosen instrument.
- Press the **Drum Pad and Fun/Animal Sound Buttons** to add effects.
- Slide the **Tempo Slider** to change the melody speed or jam the sounds.
- Press the **Recording Button** to record your music, then press Play to listen to your creations.

## Game Time Mode

- Press the **Game Button**  to enter Game Mode.
- A melody will play and then pause in the middle.
- Follow the instructions to complete the steps. Once finished, the melody will continue.
- At the end, the melody plays with the effects you added, creating your own unique version.

## CARE & MAINTENANCE

1. Keep the unit clean by wiping it with a slightly damp cloth.
2. Keep the unit out of direct sunlight and away from any direct heat sources.
3. Remove the batteries if the unit will not be in use for an extended period of time.
4. Do not drop the unit on hard surfaces and do not expose the unit to moisture or water.

## TROUBLESHOOTING

If for some reason the unit stops working or malfunctions, please follow these steps:

1. Turn the unit **Off**.
2. Interrupt the power supply by removing the batteries.
3. Let the unit stand for a few minutes, then replace the batteries.
4. Turn the unit **On**. The unit should now be ready to use again.
5. If the unit still does not work, install a new set of batteries.

## IMPORTANT NOTE:

If the problem persists, please contact our **Consumer Services Department** at **1-800-521-2010** in the U.S., **1-877-352-8697** in Canada, or by going to our website **vtechkids.com** and filling out our **Contact Us** form located under the **Customer Support** link. Creating and developing VTech products is accompanied by a responsibility that we take very seriously. We make every effort to ensure the accuracy of the information, which forms the value of our products. However, errors sometimes can occur. It is important for you to know that we stand behind our products and encourage you to contact us with any problems and/or suggestions you might have. A service representative will be happy to help you.

### Note:

This equipment has been tested and found to comply with the limits for a Class B digital device, pursuant to Part 15 of the FCC Rules. These limits are designed to provide reasonable protection against harmful interference in a residential installation. This equipment generates, uses and can radiate radio frequency energy and, if not installed and used in accordance with the instructions, may cause harmful interference to radio communications. However, there is no guarantee that interference will not occur in a particular installation. If this equipment does cause harmful interference to radio or television reception, which can be determined by turning the equipment off and on, the user is encouraged to try to correct the interference by one or more of the following measures:

- Reorient or relocate the receiving antenna.
- Increase the separation between the equipment and receiver.
- Connect the equipment into an outlet on a circuit different from that to which the receiver is connected.
- Consult the dealer or an experienced radio/TV technician for help.

**Caution:** Changes or modifications not expressly approved by the party responsible for compliance could void the user's authority to operate the equipment.

**Supplier's Declaration of Conformity**  
**47 CFR § 2.1077 Compliance Information**

Trade Name: VTech®  
Model: 5961  
Product Name: Jamming Musical Station™  
Responsible Party: VTech Electronics North America, L.L.C.  
Address: 1156 W. Shure Drive, Suite 200,  
Arlington Heights, IL 60004  
Website: vtechkids.com

THIS DEVICE COMPLIES WITH PART 15 OF THE FCC RULES. OPERATION IS SUBJECT TO THE FOLLOWING TWO CONDITIONS: (1) THIS DEVICE MAY NOT CAUSE HARMFUL INTERFERENCE, AND (2) THIS DEVICE MUST ACCEPT ANY INTERFERENCE RECEIVED, INCLUDING INTERFERENCE THAT MAY CAUSE UNDESIRED OPERATION.  
CAN ICES(B)/NMB(B)

**Visit our website for more  
information about our products,  
downloads, resources and more.**

***vtechkids.com***  
***vtechkids.ca***

Read our complete warranty policy online at  
***vtechkids.com/warranty***  
***vtechkids.ca/warranty***

